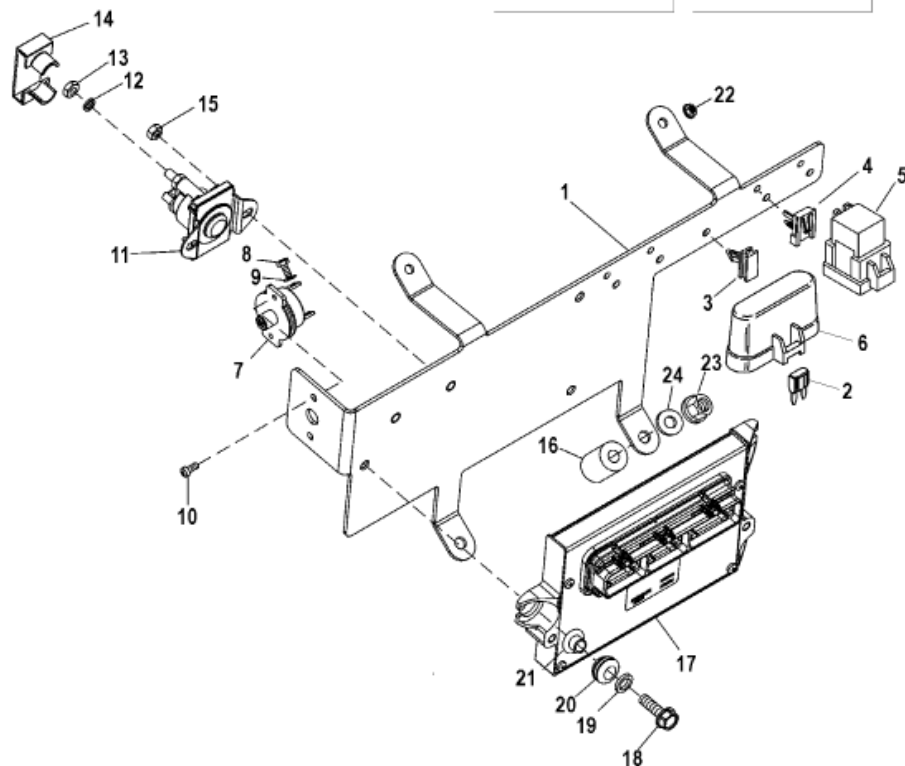


DESIGN-I



DESIGN-II



4824

Parts List

| Ref | Class | Part | Description | Qty | Comment | Footnote |
|------|-------|-----------|-----------------------------------|-----|---------------------------------------|----------|
| 1 | | 862539T | MOUNTING BRACKET | 1 | (Use with Design-I Ignition Coil) SN | |
| 1 | | 862539T01 | MOUNTING BRACKET | 1 | (Use with Design-II Ignition Coil) SN | |
| NS | 84 | 863084T | HARNESS, Wiring (EFI) | 1 | (Mechanical Throttle/Shift) SN# 01 | |
| NS | 84 | 863934T01 | HARNESS, Wiring (Integrated EFI) | 1 | (Mechanical Throttle and Shift) SN | |
| NS | 84 | 865457A02 | HARNESS, Wiring (Base-Integrated) | 1 | (Mechanical Throttle and Shift) SN | |
| NS | 84 | 865457A02 | HARNESS, Wiring (H.O.-Integrated) | 1 | (Mechanical Throttle and Shift) SN | |
| NS | 84 | 863935T01 | HARNESS, Wiring (Integrated EFI) | 1 | (Digital Throttle and Shift) SN# 0M | |
| NS | 84 | 865458A01 | HARNESS, Wiring (Integrated EFI) | 1 | (Digital Throttle and Shift) SN# 0M | |
| 2 | 88 | 832969 | FUSE, Mini (Yellow - 20 Ampere) | 3 | | |
| 3 | 54 | 804351 | CLIP, Fuse Block Mounting | 1 | | |
| 4 | 54 | 804352 | CLIP, Relay Mounting | 3 | | |
| 5 | | 807057T | RELAY (Mechanical Throttle-Shift) | 3 | | |
| 5 | | 807057T | RELAY (Digital Throttle-Shift) | 4 | | |
| 6 | | 883562 | COVER, Fuse | 1 | | |
| 7 | 88 | 806950 | CIRCUIT BREAKER, (50 Ampere) | 1 | | |
| 8 | 10 | 68513 | SCREW, (#10-32 x .375) | 2 | | |
| 9 | 13 | 26996 | LOCKWASHER, (#10) | 2 | | |
| 10 | 10 | 57583 | SCREW, (#8-32 x .375) | 2 | | |
| 11 | 89 | 96158T | SOLENOID | 1 | | |
| N.S. | 11 | 26419 | NUT, (#8-32) | 2 | | |
| N.S. | 13 | 26996 | LOCKWASHER, (#10) | 2 | | |
| 12 | 13 | 26992 | LOCKWASHER, (.250) | 2 | | |
| 13 | 11 | 94330 | NUT, (.250-20) | 2 | | |
| 14 | 85 | 97861 | INSULATOR, Solenoid | 1 | | |
| 15 | 11 | 40021 | NUT, (M6) | 2 | | |
| 16 | 23 | 862995 | SPACER | 1 | | |
| 17 | | 863620T | PCM (Base) | 1 | (Mechanical Throttle and Shift) SN | |
| 17 | | 865365T01 | PCM (Base) | 1 | (Mechanical Throttle and Shift) SN | |
| 17 | | 864733T01 | PCM (Base) | 1 | (Digital Throttle and Shift) SN# 0M | |
| 17 | | 864733T03 | PCM (Base) | 1 | (Digital Throttle and Shift) SN# 0M | |
| 17 | | 863621T | PCM (H.O.) | 1 | (Mechanical Throttle and Shift) SN | |
| 17 | | 865367T01 | PCM (H.O.) | 1 | (Mechanical Throttle and Shift) SN | |
| 17 | | 864734T02 | PCM (H.O.) | 1 | (Digital Throttle and Shift) SN# 0M | |
| 18 | 10 | 821300 | SCREW, (M6 x 25) | 3 | | |
| 19 | 23 | 856954 | BUSHING, Electrical Plate | 3 | | |
| 20 | 25 | 834985 | GROMMET | 3 | | |
| 21 | 12 | 65567 | WASHER, (.265 x .750 x .048) | 3 | | |
| 22 | 11 | 40020 | NUT, (M8) | 2 | | |
| 23 | 11 | 863289 | NUT | 2 | | |
| 24 | 12 | 12038 | WASHER | 2 | | |